

# LIST OF ADDITIONAL SECTORS ALLOWED TO OPERATE SUBJECT TO CONDITIONS



MINISTRY OF  
INTERNATIONAL TRADE AND INDUSTRY



## Aerospace industry

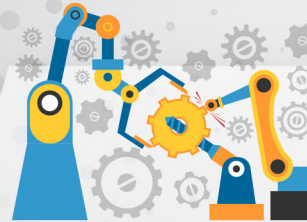


**Automotive industry**  
(limited to exports of CBU, parts and components, as well as after-sale services, e.g., repair and maintenance)



## Construction projects and services related to construction works:

- Projects whereby the main contractors are G1-G2
- Projects that have achieved physical progress of 90% and above
- Tunneling works
- Maintenance works
- Sloping works
- Emergency works that are consequent to contractual obligations
- Maintenance, cleaning and drying of stagnant water, spraying of pesticides at construction sites which prevent the breeding of Aedes mosquitoes and other pests
- Other works that if left incomplete may result in danger
- Building projects with 70 IBS score and above
- Construction projects with accommodation facilities for workers, such as centralised quarters for workers or workers' camp
- Professional services related to the construction industry including architects, engineers, town-planners, land surveyors, quantity surveyors, project managers, facility managers as well as other relevant services.



## Machinery and equipment industry

# LIST OF ADDITIONAL SECTORS ALLOWED TO OPERATE SUBJECT TO CONDITIONS



MINISTRY OF  
INTERNATIONAL TRADE AND INDUSTRY



Science, professional and technical services, including R&D (limited to legal services, services incidental to oil and gas, R&D activities related to COVID-19, and testing labs for the sectors allowed to operate)



Social health services including registered traditional and complementary medicine (TCM) practitioners



Hardware shops, electrical and electronic (E&E) shops and optometrists in the wholesale and retail industry



Hairdressing (offering haircuts only) and laundry services (only those offering full-service and does not include self-service laundrettes)



 [www.miti.gov.my](http://www.miti.gov.my)

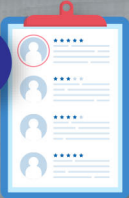
   MITIMalaysia

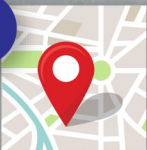
 MITIMalasiayoutube

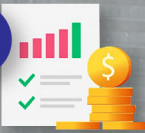
# WHAT ARE THE DETAILS INFORMATION COMPANIES NEED TO PREPARE BEFORE APPLYING TO MITI FOR APPROVAL TO OPERATE?




MINISTRY OF  
INTERNATIONAL TRADE AND INDUSTRY

- 

1 Company registration details including its SSM number, priorities license number and local authorities license number.
- 

2 Company's correspondence and operation address. For the latter, companies are allowed to list up to 10 locations.
- 

3 Company's estimated revenue for the year 2017, 2018 and 2019.
- 

4 Company's total number of permanent employees. The details of each employee, including name, NRIC or other identification details, nature/scope of work in the company and contact details must be submitted.

**No hard copies, all digital!**

